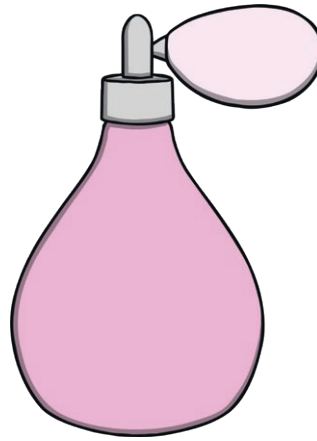




cupcake



perfume



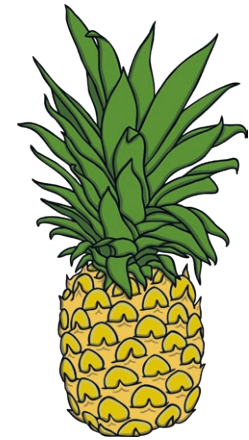
dog



music



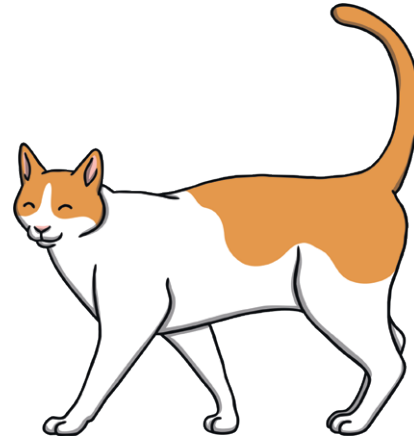
fireworks



pineapple



flower



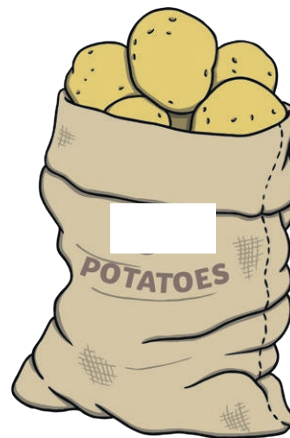
cat



girl singing



cloud with rainbow



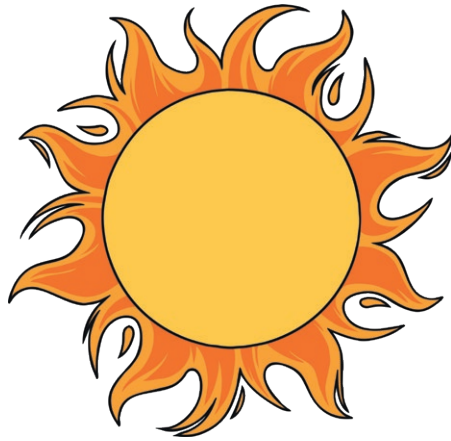
potatoes



garbage



teddy bear



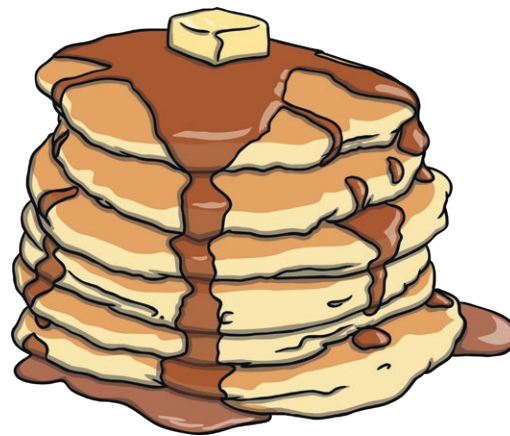
sun



candle



stereo



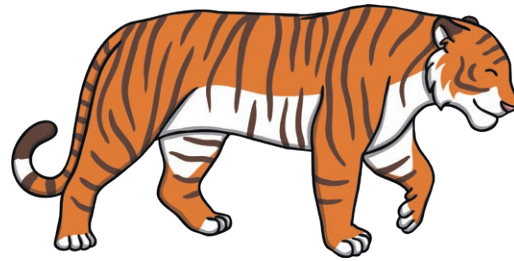
pancakes



grass



band



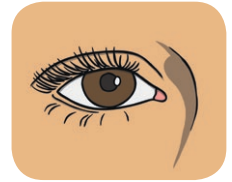
tiger

Five Senses Matching Cards

Laminate and cut out the object cards. Shuffle the cards. Students match the object with the correct sense.



Five Senses



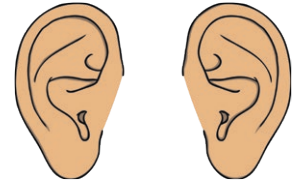
sight

A large rectangular area defined by a dashed purple border, intended for writing or drawing. The area is divided into four quadrants by a vertical dashed line and a horizontal dashed line that meet at a central point.



Five Senses

hearing



A large rectangular area defined by a dashed purple line, intended for writing or drawing. The area is divided into four quadrants by a vertical dashed line and a horizontal dashed line that meet at a central point. Each of the four corners of the dashed box has a small, decorative notch.



Five Senses



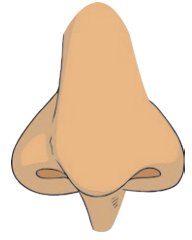
taste

A large rectangular area defined by a dashed purple border, intended for writing or drawing. The area is divided into four quadrants by a vertical dashed line and a horizontal dashed line that meet at a central point.



Five Senses

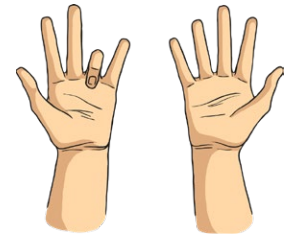
smell



A large rectangular area defined by a dashed purple border, intended for writing or drawing. The area is divided into four quadrants by a vertical dashed line and a horizontal dashed line that meet at a central point.



Five Senses



touch

A large dashed-line box for writing, divided into four quadrants by a vertical and a horizontal dashed line.